



---

**moduplan**  
[dotted underline]



**TELEPHONE/EMAIL:**

**LANDLINE:** 01254 478 162

**MOBILE:** 07930 416 661

**EMAIL:** [info@moduplan.co.uk](mailto:info@moduplan.co.uk)

**WEBSITE:** [www.moduplan.co.uk](http://www.moduplan.co.uk)

**CONTACT**

**ADDRESS:**

**Moduplan Ltd**

**Unit 5**

**Cunliffe Court**

**Clayton Le Moors**

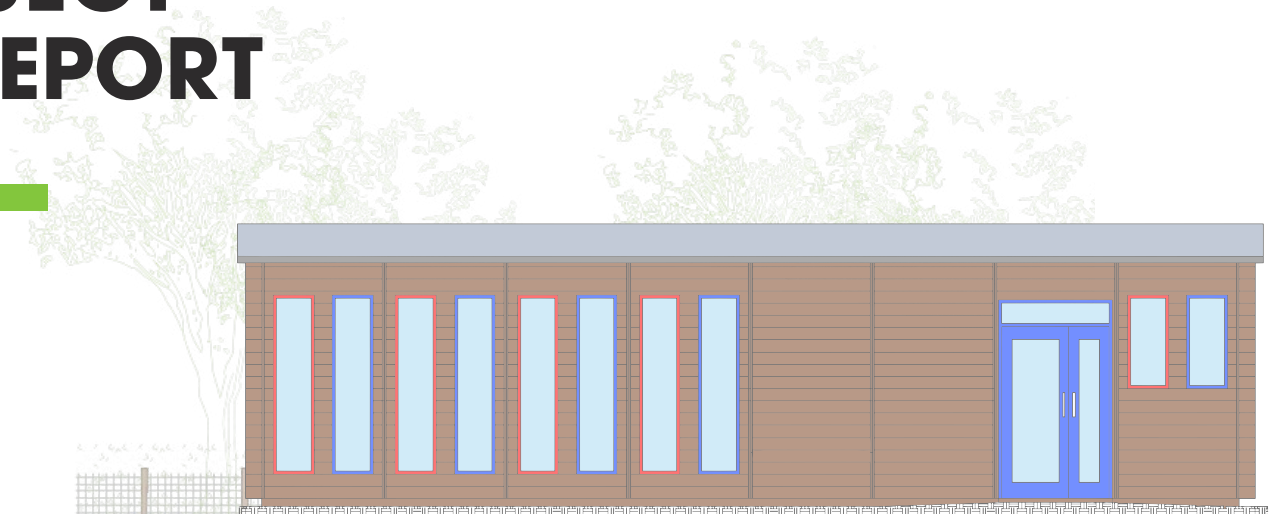
**BB5 5JG**

---

**MODUPLAN LTD.**

# SUCCESSFUL PROJECT DESIGN & BUILD REPORT

**BRING BUILDING SOLUTIONS & PEOPLE TOGETHER**



## CLIENT DETAILS

**ADDRESS:**

**Bowdon Church School - Music and Arts  
Room**

**Bowdon Church School  
Grange Rd  
Bowdon  
Altrincham  
WA14 3EX**



## CONTACT DETAILS

**PHONE:** 0161 928 8907  
**EMAIL:** [bowdoncs.admin@trafford.gov.uk](mailto:bowdoncs.admin@trafford.gov.uk)  
**WEBSITE:** [www.bowdoncs.org.uk](http://www.bowdoncs.org.uk)





# INTRODUCTION TO MODUPLAN

---

## Welcome to moduplan

As with all good ideas, the moduplan building system is the result of demand.

Having worked in the educational and domestic construction sector for over twenty years, I saw the requirement for affordable, quality accommodation that was flexible to the client's needs and the variations in every site.

moduplan offers a hassle-free alternative to traditional bricks and mortar and a stylish and modern option in place of unsightly portable cabin structures.

With moduplan I ask our clients to get involved in the design process, choosing their own colours, panel types and finishes.

Our inherently robust design means that all the hard work has been done for you and minimises the need for professional services and fees.

Of course, I'm proud of our products but I place equal value on customer service and satisfaction. All my staff are professional and a pleasure to deal with and together we look forward to helping you create your moduplan building.

---

**moduplan Ltd.**

# TABLE OF CONTENTS

---

**SECTION 1 | CLIENT BRIEF**

**SECTION 2 | OUR PROPOSED SOLUTION**

**SECTION 3 | PROJECT PLANNING**

**SECTION 4 | PROJECT OUTCOME**

---

# **01 OUR CLIENTS BRIEF**

---

**Bowdon Church School is situated in the residential suburb of Bowdon on the outskirts of Altrincham.**

---

## HELPING RAISE ALREADY HIGH STANDARDS OF TEACHING ENVIRONMENTS

The school has an excellent reputation in the community for providing the highest standards of education and its pro-active role in supporting the pupils in extra-curricular activities.

As a school that was recently built, the existing buildings and facilities offer a modern environment in which the staff and pupils have just about every resource available to support teaching, sport and other school activities.

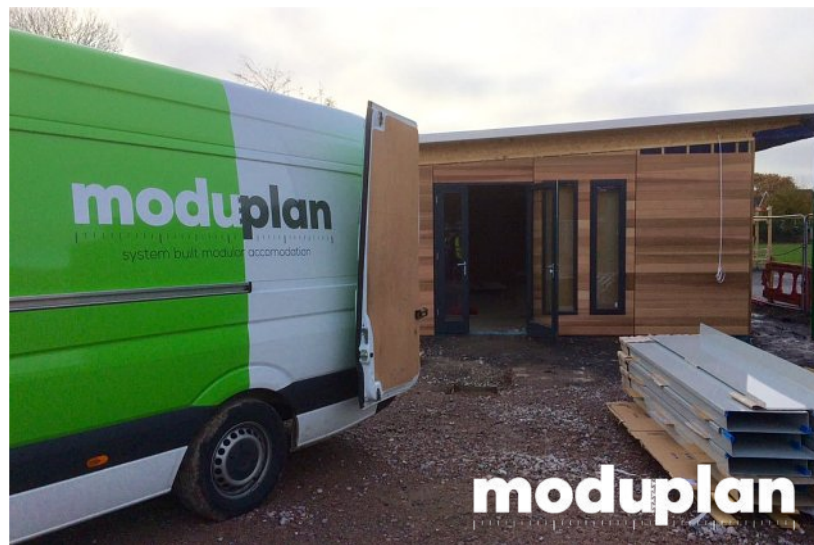
However, due to it's expanding arts and music programme, the school wanted to compliment its existing facilities with a music and art room that could also be adapted for community use for open days and events.



**Bowdon Church School**

Our vision and values are at the core of everything we do. They underpin our teaching and learning, and provide an environment which prepares our pupils as confident, successful and happy citizens.

The space they wanted to create had to match the existing buildings in terms of design and quality, integrate into the existing school layout and be flexible as a multi-use resource for different age groups.



moduplan came recommended to the school by their Building Surveyors and the local Diocese, having produced buildings for other schools in the area.

The staff of Bowdon were invited to visit other completed moduplan builds, were very impressed with the design and quality and decided that moving forward with the moduplan building system was the best solution.

## **02 OUR PROPOSED SOLUTION**

---

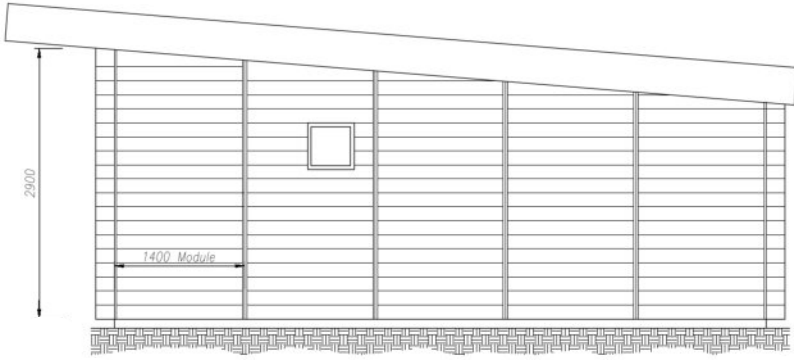
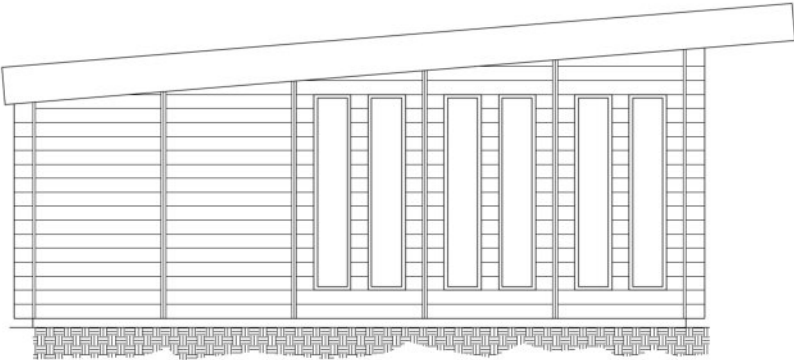
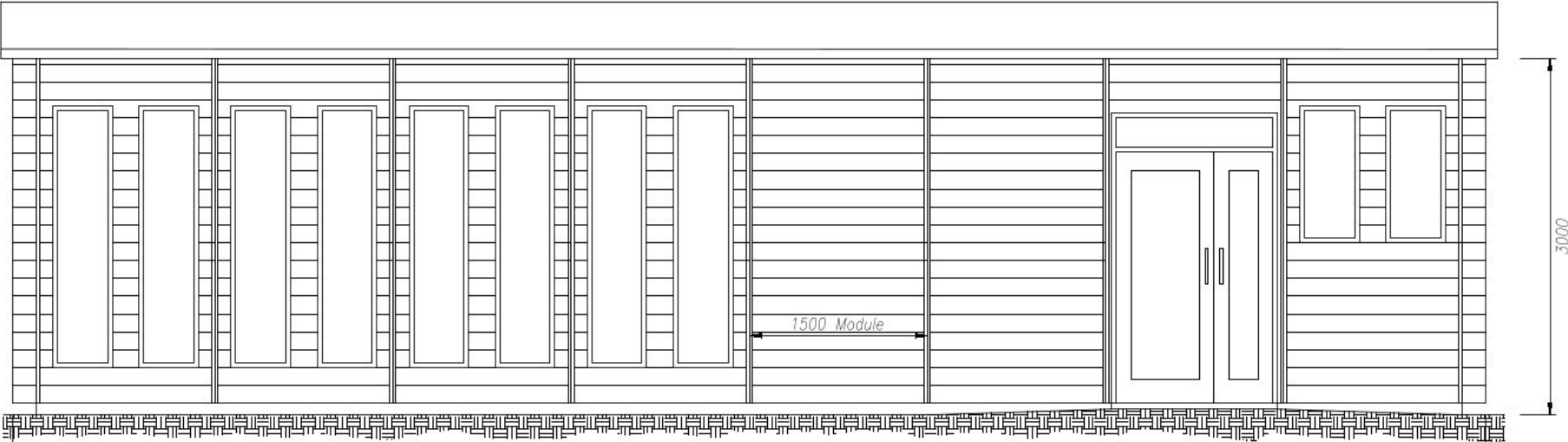
**The school opted for a full design and build package from moduplan with project management by AHR Global consultants.**

---

# BUILDING DESIGN THAT CREATE A STUNNING FIRST IMPRESSION

The site for the Music and Arts Room was adjacent to the front entrance of the school and was restricted by the land conditions and existing services.

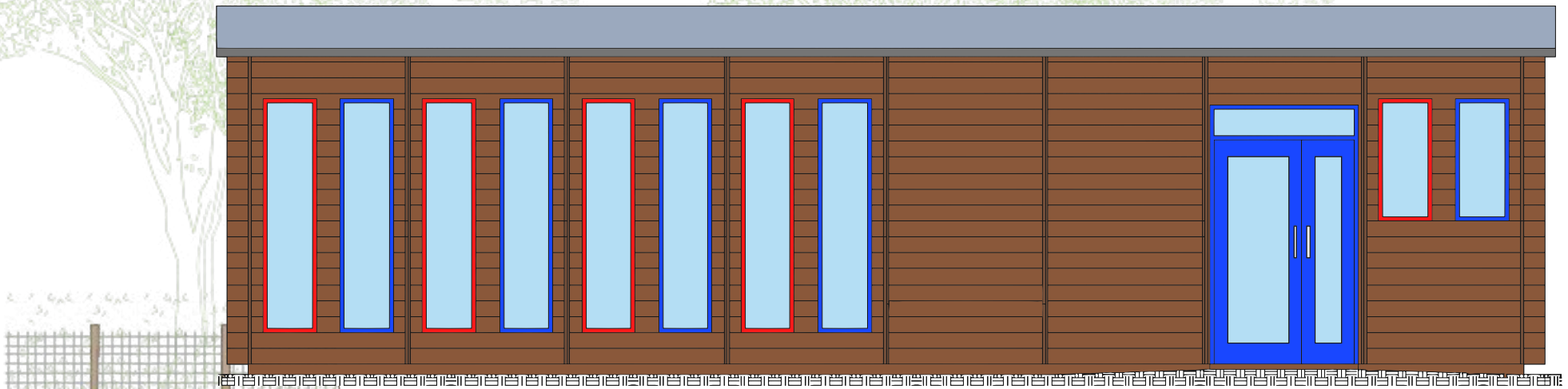
This meant a more linear design to fit within the existing attenuation pits for the drainage and the design of a reinforced raft foundation to sit on the filled land where the new school had been raised to avoid flood issues.





Structural Engineer and consulting with Building Control, moduplan proposed a solution that could site the building close to the school entrance, integrate with the existing services and provide secure access from within the school grounds to the new building.

The Music and Arts room had to be designed so that it could operate independently from the school for community events and offer a flexible layout as a multi-use space. Careful consideration had to be given to the wide age range using the building and it had to be made fully accessible and compliant as a DDA facility. The moduplan building system uses a traditional slab and foundation layout rather than pads and suspended floors, therefore level access is achievable on all our buildings.



The design integrated storage for the musical instruments into the main activity space and in the kitchen by using built in cupboards, thus affording more room, better security and a neater solution than free standing storage.

# **03 PROJECT PLANNING**

---

**The project commenced during term time and due to its proximity to the school entrance, safe segregation from the school and strict health and safety management were key parts of the project plan.**

---

## WORKING IN HARMONY WITH LIVE SITES, PROVIDING MINIMAL DISRUPTION

---

Due to the requirement for a reinforced sunken raft foundation, large amounts of spoil had to be shifted off the site and large quantities of aggregates and concrete had to be brought in.

This meant a well organised traffic plan had to be put into place to ensure smooth flow of the staff and pupils into the school whilst maintaining regular movement of site vehicles to keep the project on track. This was achieved efficiently and safely and the method statements and traffic plans agreed with the client in the Construction Phase H&S Plan were adhered to.

For any moduplan school project, particularly those delivered to a new-term deadline, design and procurement of the pre-manufactured components on time is an essential part of the build plan.

Short work programmes mean that every component must be pre-manufactured to fit to the highest degree of accuracy for every deadline to be met.

The project was given a seven week programme to allow for the restricted site, but completion was achieved in less than six weeks, giving the school time to move into their moduplan building and prepare for the new term.



# **04 PROJECT OUTCOME**

---

**As a school rated 'Outstanding' by Ofsted,  
any future investment in the school's  
resources has to be carefully considered by  
the staff and Governors of the school.**

---

## PROVIDING REAL PROPERTY ASSETS THAT COMPLIMENT YOUR EXISTING PORTFOLIO

---

The Music and Arts Room has proved to be a great asset to this high achieving school and is also proving to be a flexible space that can be used as a community group room and training room for staff.

The school are delighted with their new building, not only in its practicality, but also in the way it compliments the existing building in its thoughtful design and materials. Music groups and violin lessons can now be conducted in an independent building without noise issues affecting other classes, the school community can use the space for stalls and catering on open days and staff groups can hold private meetings and conferences on training days.

The school are now planning on replacing their existing portable-cabin nursery unit with a moduplan building and we are looking forward to partnering with them again in the future to expand, improve and maintain their excellent facilities.





## GET IN TOUCH

---

**ADDRESS:**

**moduplan Ltd.**

**Unit 5**

**Cunliffe Court**

**Clayton Le Moors**

**BB5 5JG**

**LANDLINE: 01254 478 162**

**MOBILE: 07930 416 661**

**EMAIL: [info@moduplan.co.uk](mailto:info@moduplan.co.uk)**

**WEBSITE: [www.moduplan.co.uk](http://www.moduplan.co.uk)**

**SCAN TO VISIT OUR WEBSITE:**

